

# OFFICE SPACE FOR LEASE



**5251 & 5401 S EAST STREET**

**INDIANAPOLIS, INDIANA 46227**

**MONTHLY RENT  
STARTS AT \$475/MO**

## Professional Office Space for Lease in Indianapolis

Looking for a new space for your business? Explore our versatile commercial office spaces in a prime location at **5251 and 5401 South East Street**, just 2 minutes south of I-465. Offering spaces ranging from 200 to 1,325 square feet, with monthly rent starting at \$475/month, **all utilities are included (even WIFI)**. Flexible lease terms to allow for customization based on your needs. Enjoy access to shared conference rooms, breakrooms, and kitchenettes. Many offices feature windows, providing natural light. The building is secure with a fob system accessible to tenants 24/7, and is open to guests from 8am to 5pm. Plus, the surrounding area offers a wide variety of restaurants and amenities to enhance your workday.

## PROPERTY HIGHLIGHTS

- Professional office spaces for lease
- 200 SF - 1,325 SF office space available
- Monthly rent starting at \$475/month
- **All utilities included in rent**
- Flexible lease terms
- Shared Conference Rooms
- Breakroom/ Kitchenette
- Restrooms
- Available space with natural lighting
- Tenant card fobs allowing 24/7 Access
  - Building unlocked from 8:00 AM - 5:00 PM



We obtained the information above from sources we believe to be reliable. However, we have not verified its accuracy and make no guarantee, warranty or representation about it. It is submitted subject to the possibility of errors, omissions, change of price, rental or other conditions, prior sale, lease or financing, or withdrawal without notice. We include projections, opinions, assumptions or estimates for example only, and they may not represent current or future performance of the property. You and your tax and legal advisors should conduct your own investigation of the property and transaction.



**TERESA HARWOOD, CCIM**

Cell: 317.354.5236  
tharwood@kw.com

**MORGAN MATHAUER**

Office: 317.455.8111  
Cell: 765.318.8053  
mmathauer@kw.com

48 N Emerson Avenue, STE 300,  
Greenwood, IN 46143 - United States  
[www.harwoodcommercialgroup.com](http://www.harwoodcommercialgroup.com)



### 5251 S EAST STREET

Suite	Square Footage	Monthly Rent
6 (Lease Pending)	408 SF	\$850
15 (Lease Pending)	547 SF	\$1,125
18	635 SF	\$1,400
18 A	200 SF	\$475
18 B	200 SF	\$475
18 C	200 SF	\$475



### 5401 S EAST STREET

Suite	Square Footage	Monthly Rent
107	1,072 SF	\$1,850
117 (Lease Pending)	821 SF	\$1,500
201	813 SF	\$1,490
202	1,181 SF	\$2,050
203	561 SF	\$1,150
205 B	299 SF	\$800
206 A	534 SF	\$1,100
206 B	478 SF	\$950
208	857 SF	\$1,600
209	750 SF	\$1,475
211	1,325 SF	\$2,400



**CALL TODAY TO SCHEDULE  
 A PRIVATE TOUR!  
 (317) 455-8111**

We obtained the information above from sources we believe to be reliable. However, we have not verified its accuracy and make no guarantee, warranty or representation about it. It is submitted subject to the possibility of errors, omissions, change of price, rental or other conditions, prior sale, lease or financing, or withdrawal without notice. We include projections, opinions, assumptions or estimates for example only, and they may not represent current or future performance of the property. You and your tax and legal advisors should conduct your own investigation of the property and transaction.

**TERESA HARWOOD, CCIM**

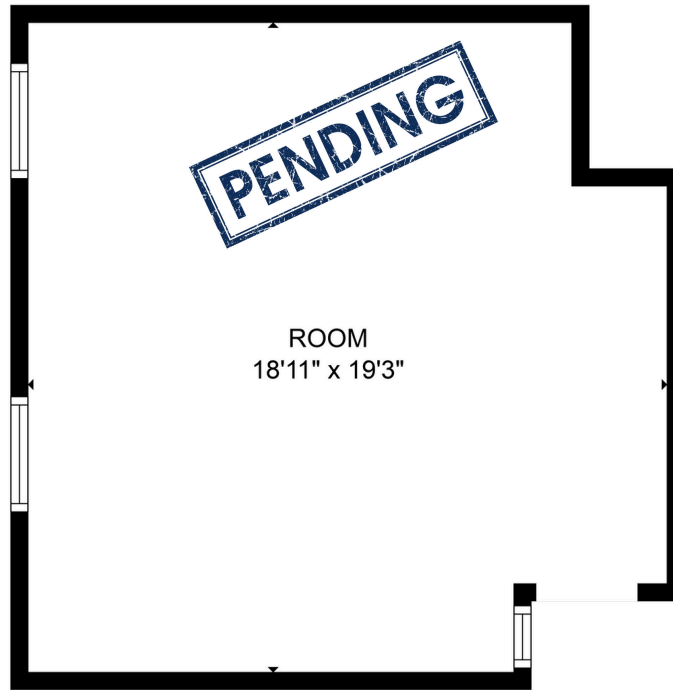
Cell: 317.354.5236  
 tharwood@kw.com

**MORGAN MATHAUER**

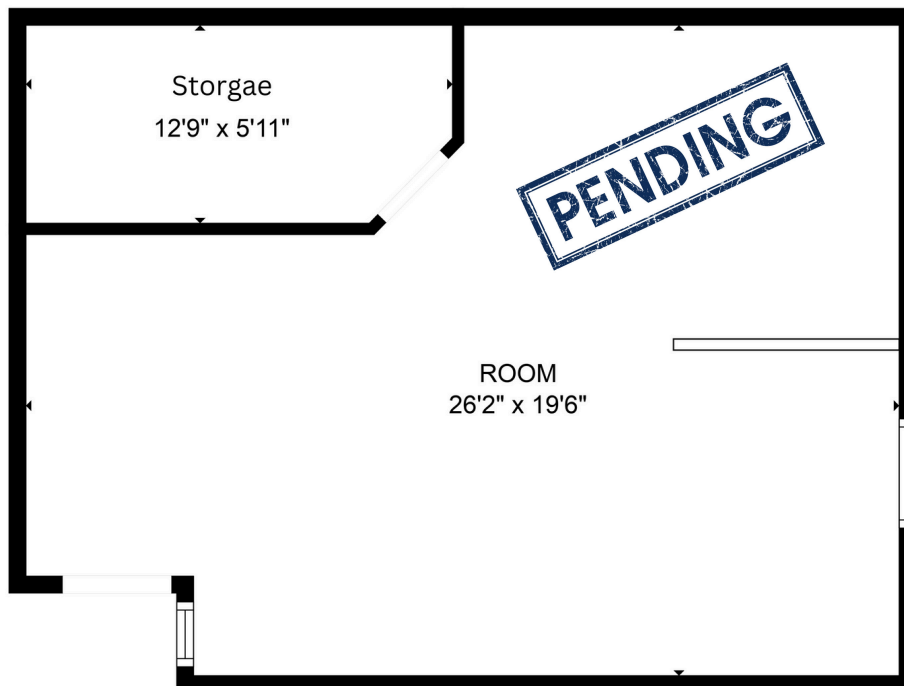
Office: 317.455.8111  
 Cell: 765.318.8053  
 mmathauer@kw.com

48 N Emerson Avenue, STE 300,  
 Greenwood, IN 46143 - United States  
 www.harwoodcommercialgroup.com





5251 South East Street Suite 6



5251 South East Street Suite 15

We obtained the information above from sources we believe to be reliable. However, we have not verified its accuracy and make no guarantee, warranty or representation about it. It is submitted subject to the possibility of errors, omissions, change of price, rental or other conditions, prior sale, lease or financing, or withdrawal without notice. We include projections, opinions, assumptions or estimates for example only, and they may not represent current or future performance of the property. You and your tax and legal advisors should conduct your own investigation of the property and transaction.

**TERESA HARWOOD, CCIM**

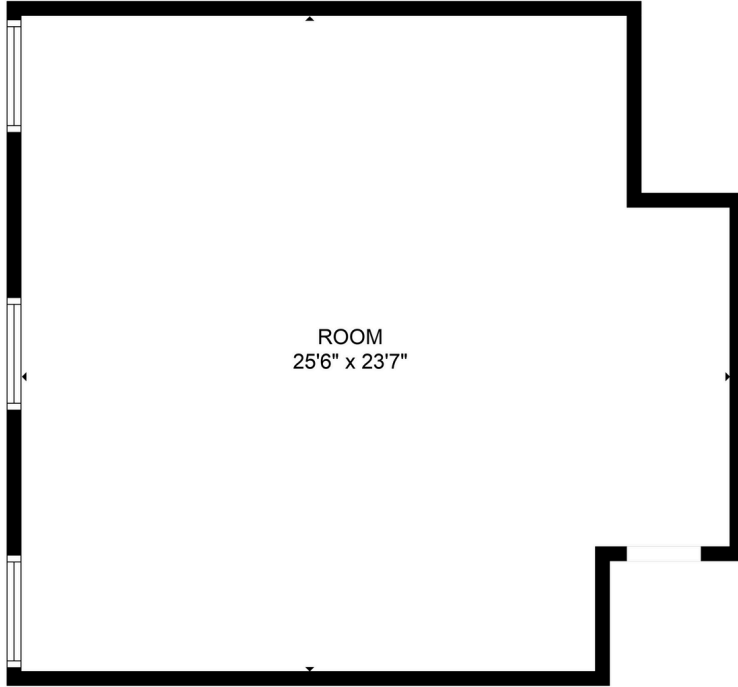
Cell: 317.354.5236  
tharwood@kw.com

**MORGAN MATHAUER**

Office: 317.455.8111  
Cell: 765.318.8053  
mmathauer@kw.com

48 N Emerson Avenue, STE 300,  
Greenwood, IN 46143 - United States  
[www.harwoodcommercialgroup.com](http://www.harwoodcommercialgroup.com)

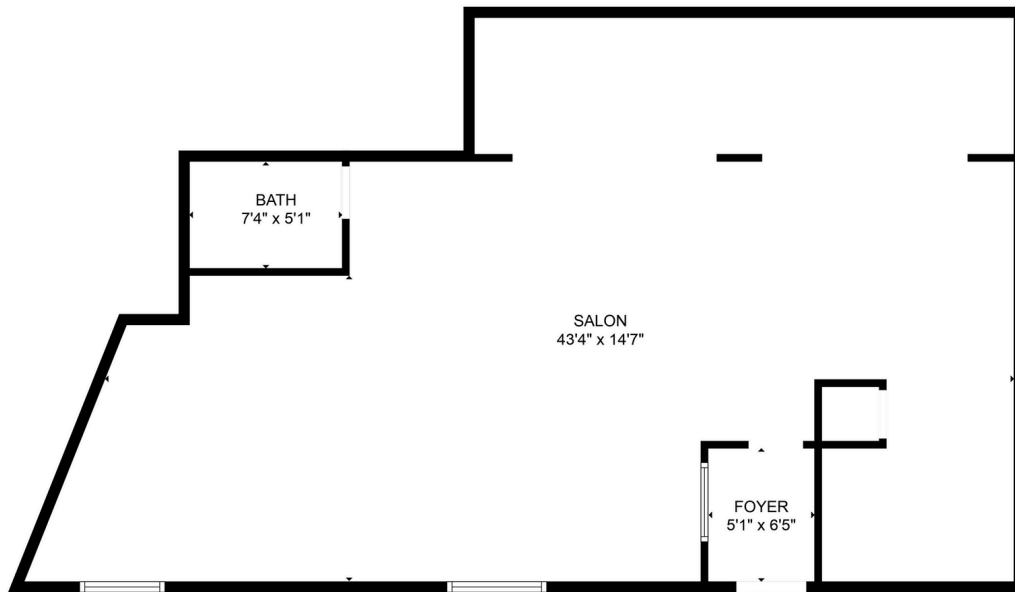




**5251 South East Street Suite 18**



**5251 South East Street Suite 18 A, B,C**



**5401 South East Street Suite 107**

We obtained the information above from sources we believe to be reliable. However, we have not verified its accuracy and make no guarantee, warranty or representation about it. It is submitted subject to the possibility of errors, omissions, change of price, rental or other conditions, prior sale, lease or financing, or withdrawal without notice. We include projections, opinions, assumptions or estimates for example only, and they may not represent current or future performance of the property. You and your tax and legal advisors should conduct your own investigation of the property and transaction.

**TERESA HARWOOD, CCIM**

Cell: 317.354.5236  
 tharwood@kw.com

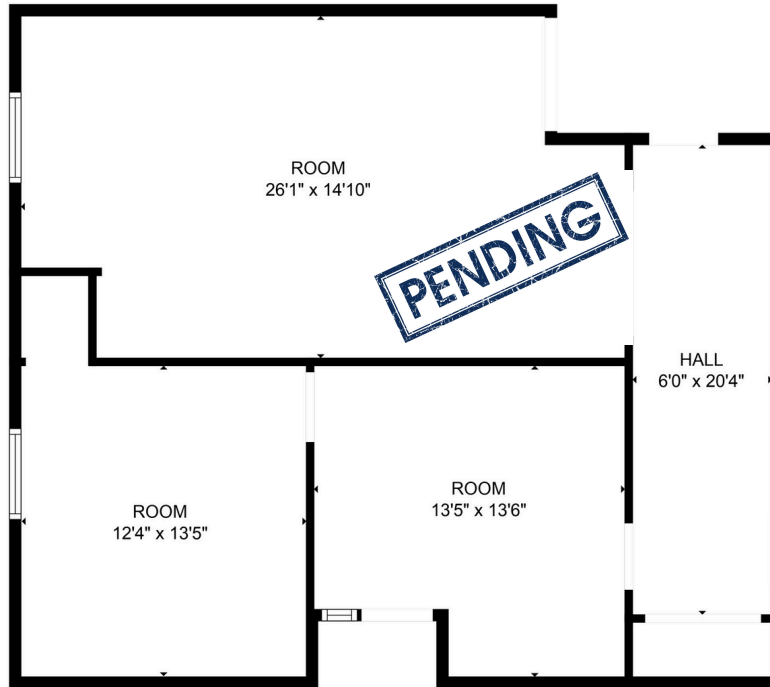
**MORGAN MATHAUER**

Office: 317.455.8111  
 Cell: 765.318.8053  
 mmathauer@kw.com

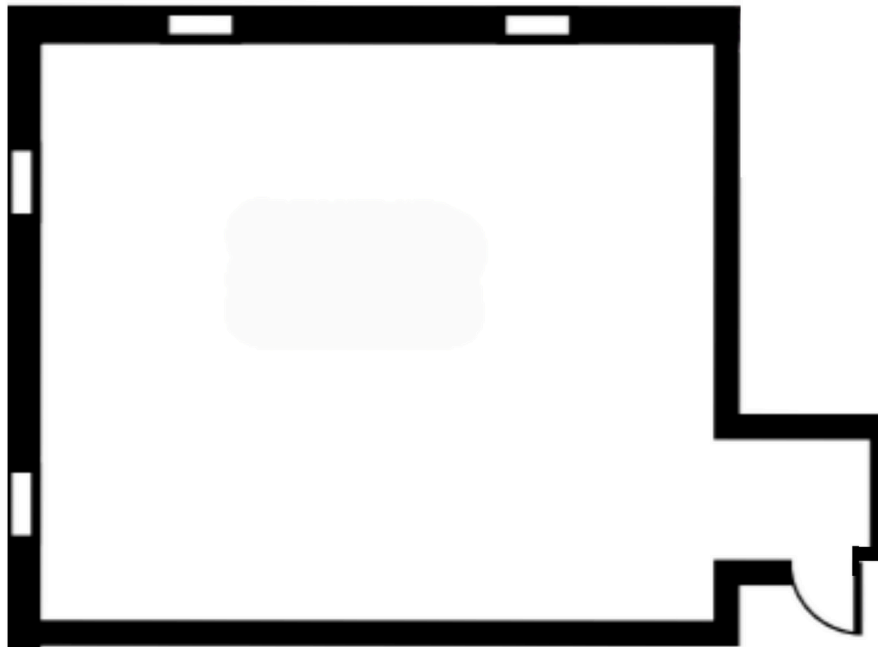
48 N Emerson Avenue, STE 300,  
 Greenwood, IN 46143 - United States  
 www.harwoodcommercialgroup.com







**5401 South East Street Suite 117**



**5401 South East Street Suite 201**

We obtained the information above from sources we believe to be reliable. However, we have not verified its accuracy and make no guarantee, warranty or representation about it. It is submitted subject to the possibility of errors, omissions, change of price, rental or other conditions, prior sale, lease or financing, or withdrawal without notice. We include projections, opinions, assumptions or estimates for example only, and they may not represent current or future performance of the property. You and your tax and legal advisors should conduct your own investigation of the property and transaction.

**TERESA HARWOOD, CCIM**

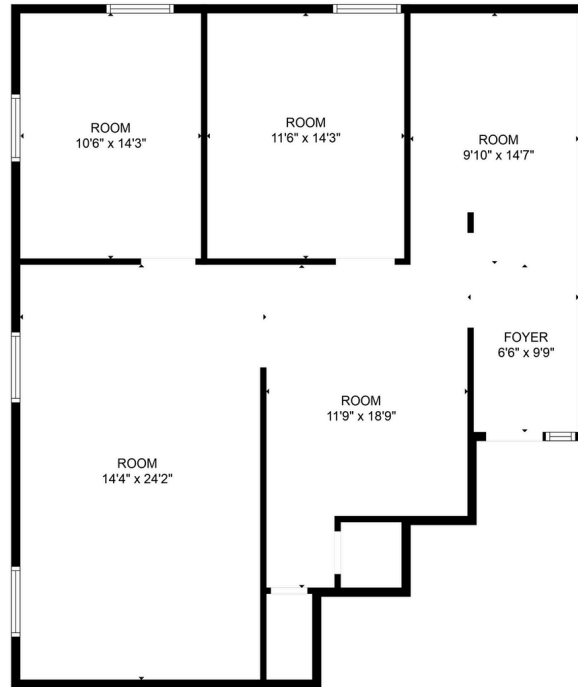
Cell: 317.354.5236  
 tharwood@kw.com

**MORGAN MATHAUER**

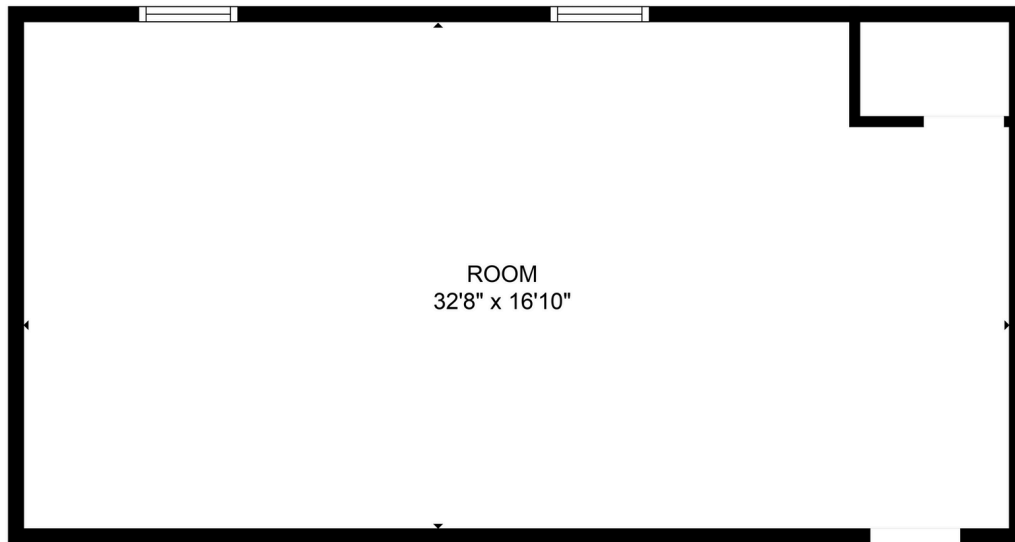
Office: 317.455.8111  
 Cell: 765.318.8053  
 mmathauer@kw.com

48 N Emerson Avenue, STE 300,  
 Greenwood, IN 46143 - United States  
[www.harwoodcommercialgroup.com](http://www.harwoodcommercialgroup.com)





**5401 South East Street Suite 202**



**5401 South East Street Suite 203**

We obtained the information above from sources we believe to be reliable. However, we have not verified its accuracy and make no guarantee, warranty or representation about it. It is submitted subject to the possibility of errors, omissions, change of price, rental or other conditions, prior sale, lease or financing, or withdrawal without notice. We include projections, opinions, assumptions or estimates for example only, and they may not represent current or future performance of the property. You and your tax and legal advisors should conduct your own investigation of the property and transaction.

**TERESA HARWOOD, CCIM**

Cell: 317.354.5236  
 tharwood@kw.com

**MORGAN MATHAUER**

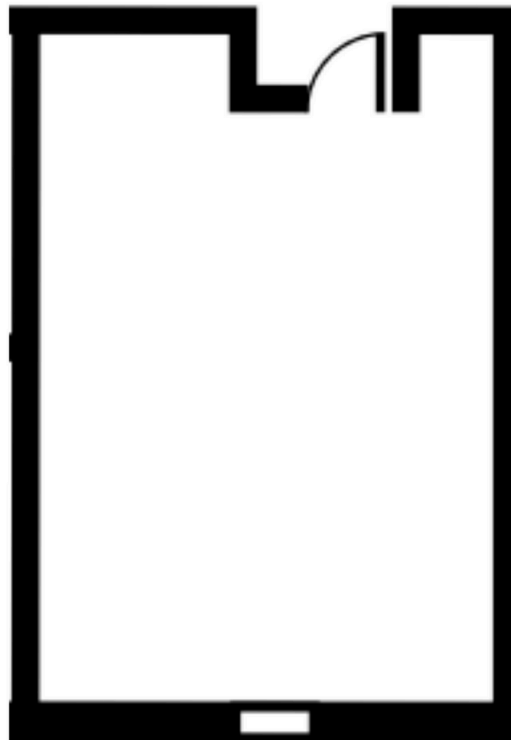
Office: 317.455.8111  
 Cell: 765.318.8053  
 mmathauer@kw.com

48 N Emerson Avenue, STE 300,  
 Greenwood, IN 46143 - United States  
[www.harwoodcommercialgroup.com](http://www.harwoodcommercialgroup.com)





5401 South East Street Suite 205 B



5401 South East Street Suite 206 A

We obtained the information above from sources we believe to be reliable. However, we have not verified its accuracy and make no guarantee, warranty or representation about it. It is submitted subject to the possibility of errors, omissions, change of price, rental or other conditions, prior sale, lease or financing, or withdrawal without notice. We include projections, opinions, assumptions or estimates for example only, and they may not represent current or future performance of the property. You and your tax and legal advisors should conduct your own investigation of the property and transaction.

**TERESA HARWOOD, CCIM**

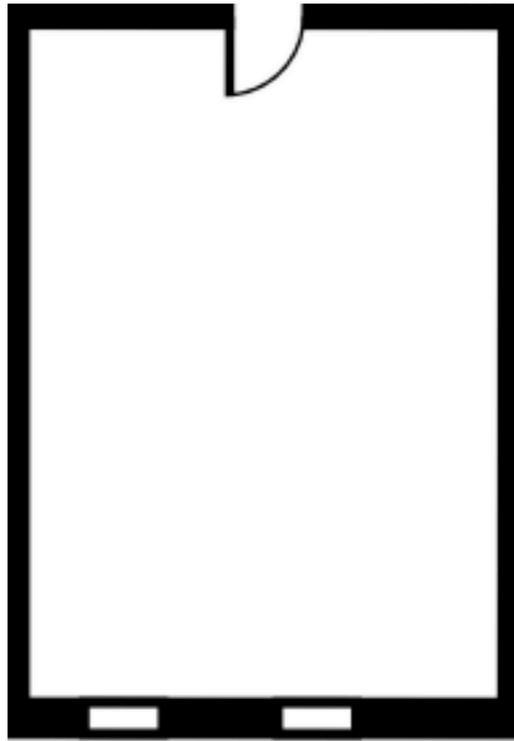
Cell: 317.354.5236  
tharwood@kw.com

**MORGAN MATHAUER**

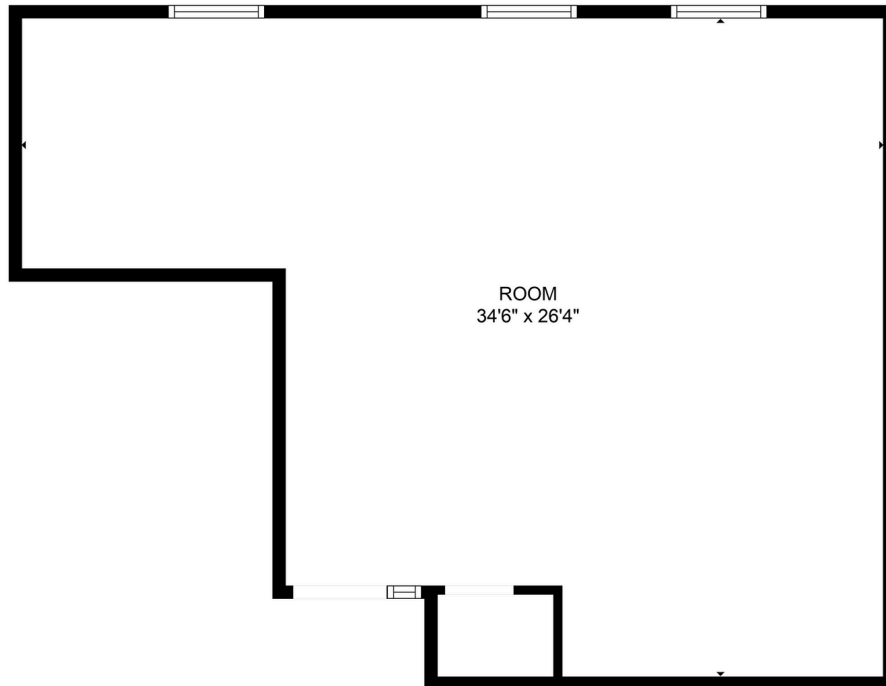
Office: 317.455.8111  
Cell: 765.318.8053  
mmathauer@kw.com

48 N Emerson Avenue, STE 300,  
Greenwood, IN 46143 - United States  
[www.harwoodcommercialgroup.com](http://www.harwoodcommercialgroup.com)





5401 South East Street Suite 206 B



5401 South East Street Suite 208

We obtained the information above from sources we believe to be reliable. However, we have not verified its accuracy and make no guarantee, warranty or representation about it. It is submitted subject to the possibility of errors, omissions, change of price, rental or other conditions, prior sale, lease or financing, or withdrawal without notice. We include projections, opinions, assumptions or estimates for example only, and they may not represent current or future performance of the property. You and your tax and legal advisors should conduct your own investigation of the property and transaction.

**TERESA HARWOOD, CCIM**

Cell: 317.354.5236  
tharwood@kw.com

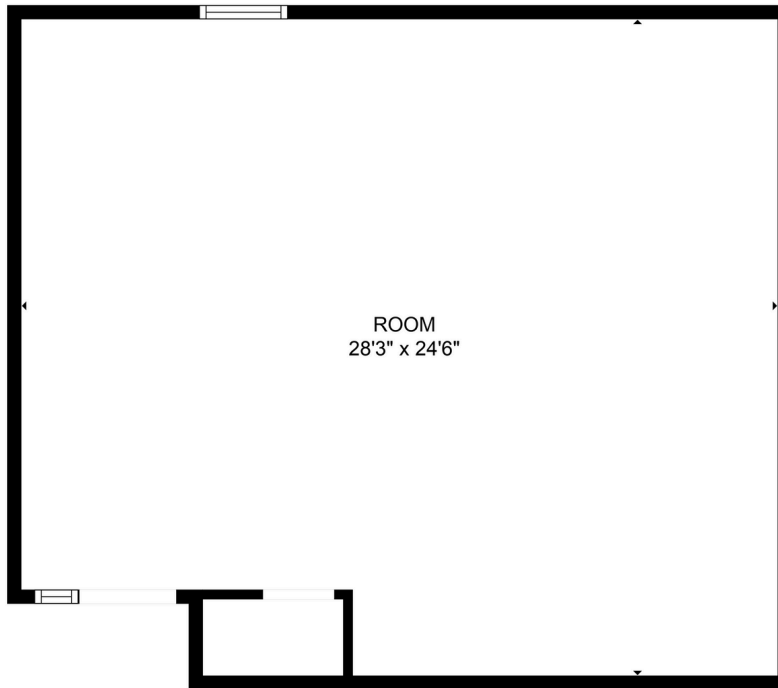
**MORGAN MATHAUER**

Office: 317.455.8111  
Cell: 765.318.8053  
mmathauer@kw.com

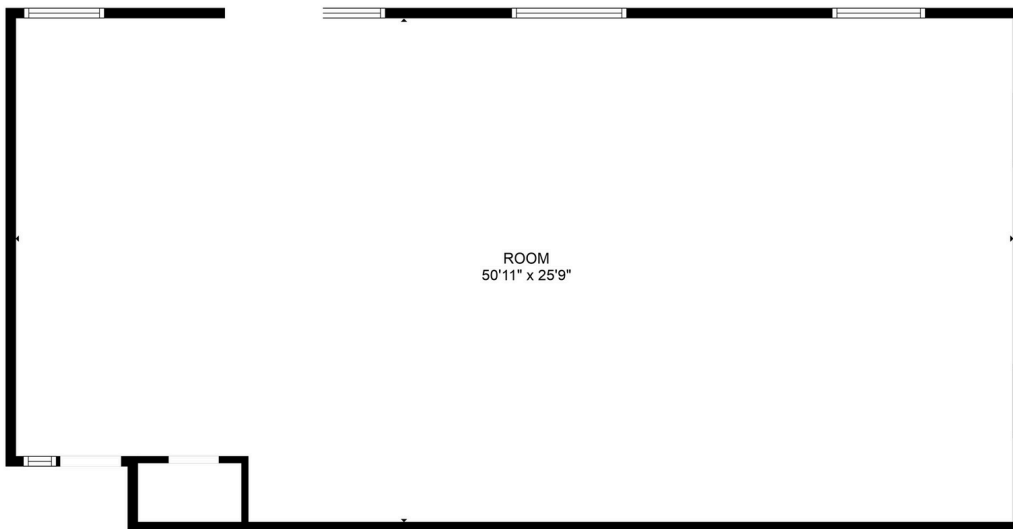
48 N Emerson Avenue, STE 300,  
Greenwood, IN 46143 - United States  
[www.harwoodcommercialgroup.com](http://www.harwoodcommercialgroup.com)







5401 South East Street Suite 209



5401 South East Street Suite 211

We obtained the information above from sources we believe to be reliable. However, we have not verified its accuracy and make no guarantee, warranty or representation about it. It is submitted subject to the possibility of errors, omissions, change of price, rental or other conditions, prior sale, lease or financing, or withdrawal without notice. We include projections, opinions, assumptions or estimates for example only, and they may not represent current or future performance of the property. You and your tax and legal advisors should conduct your own investigation of the property and transaction.

**TERESA HARWOOD, CCIM**

Cell: 317.354.5236  
tharwood@kw.com

**MORGAN MATHAUER**

Office: 317.455.8111  
Cell: 765.318.8053  
mmathauer@kw.com

48 N Emerson Avenue, STE 300,  
Greenwood, IN 46143 - United States  
[www.harwoodcommercialgroup.com](http://www.harwoodcommercialgroup.com)

