

# OFFICE FOR LEASE

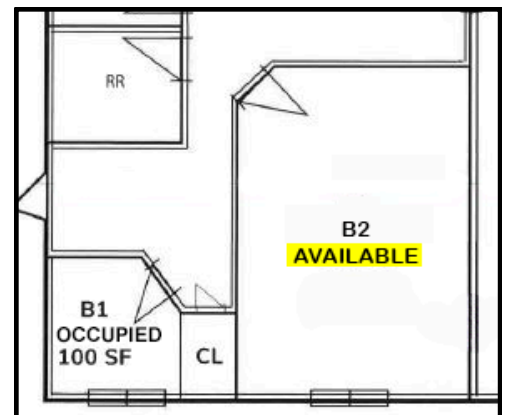


**5170 COMMERCE CIRCLE STE. B2**  
**INDIANAPOLIS, INDIANA 46237**

**\$700/Month**

## PROPERTY OVERVIEW

Discover a professional and affordable office solution in the heart of Indianapolis' Southside business district. Suite B2 is a single private office ideal for independent professionals, consultants, or small business owners seeking a quiet, secure, and accessible workspace.



We obtained the information above from sources we believe to be reliable. However, we have not verified its accuracy and make no guarantee, warranty or representation about it. It is submitted subject to the possibility of errors, omissions, change of price, rental or other conditions, prior sale, lease or financing, or withdrawal without notice. We include projections, opinions, assumptions or estimates for example only, and they may not represent current or future performance of the property. You and your tax and legal advisors should conduct your own investigation of the property and transaction.



**TERESA HARWOOD, CCIM**

Cell: 317.354.5236  
tharwood@kw.com

**MORGAN MATHAUER**

Office: 317.455.8111  
Cell: 765.318.8053  
mmathauer@kw.com

48 N Emerson Avenue, STE 300,  
Greenwood, IN 46143 - United States  
[www.harwoodcommercialgroup.com](http://www.harwoodcommercialgroup.com)



## PROPERTY HIGHLIGHTS

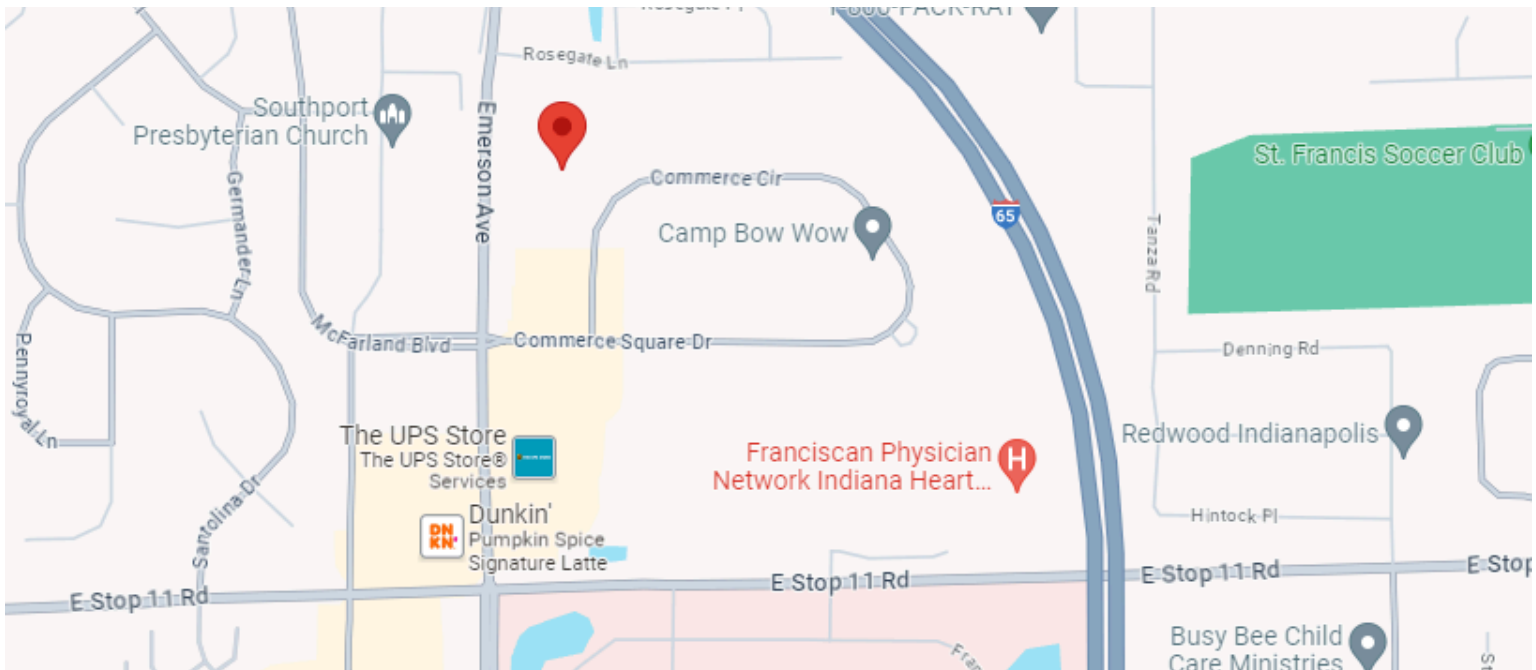
- 330 SF
- Private office
- Shared restrooms and waiting area
- Gross lease (all expenses included)
- Utilities included
- \$700/month
- Available now

## LOCATION OVERVIEW

Nestled in a vibrant business district, 5710 Commerce Circle is positioned within a well-established commercial area in the southern part of Indianapolis. Surrounded by a mix of industrial, retail, and office spaces, the location enjoys easy accessibility to major transportation routes and highways. The area is known for its diverse array of businesses, offering convenience and ease

### OFFERING OVERVIEW

LISTING PRICE	\$700/MONTH
AVAILABLE SF	330 SQ FT.
CAP RATE	N/A
YEAR BUILT	1985
NUMBER OF UNITS AVAILABLE	1
BUILDING SIZE	7,470 SQ FT
PRICE/SF/YR	\$25.45



**TERESA HARWOOD, CCIM**

Cell: 317.354.5236  
tharwood@kw.com

**MORGAN MATHAUER**

Office: 317.455.8111  
Cell: 765.318.8053  
mmathauer@kw.com

48 N Emerson Avenue, STE 300,  
Greenwood, IN 46143 - United States  
www.harwoodcommercialgroup.com