

# OFFICE FOR LEASE

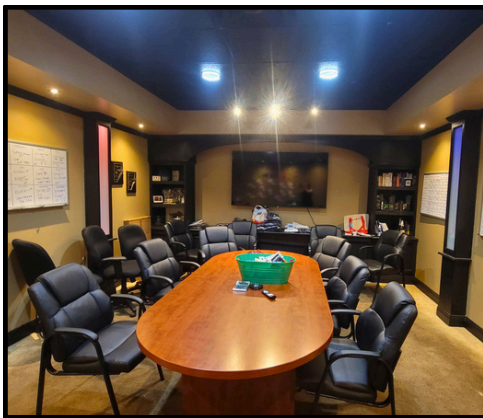
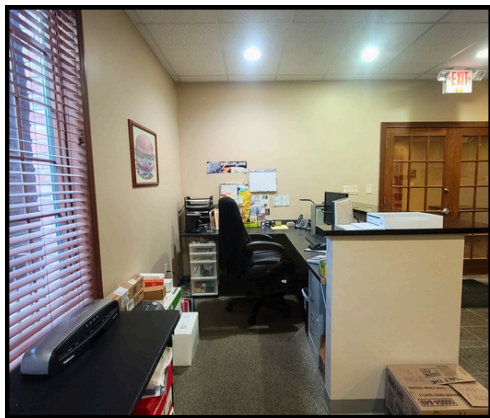


**2020 S. State Road 135 Suite 103**  
**GREENWOOD, INDIANA 46143**

**\$18/SF - NNN**  
**(Includes Utilities)**

## High Visibility Professional Office Space

Suite 103 offers an efficient and versatile first-floor (lower-level) layout with excellent natural light, ideal for a variety of small professional office users. Located just off heavily traveled State Road 135, this space provides outstanding visibility, convenient access, and close proximity to Greenwood's booming residential and commercial communities.



We obtained the information above from sources we believe to be reliable. However, we have not verified its accuracy and make no guarantee, warranty or representation about it. It is submitted subject to the possibility of errors, omissions, change of price, rental or other conditions, prior sale, lease or financing, or withdrawal without notice. We include projections, opinions, assumptions or estimates for example only, and they may not represent current or future performance of the property. You and your tax and legal advisors should conduct your own investigation of the property and transaction.



**TERESA HARWOOD, CCIM**

Cell: 317.354.5236  
tharwood@kw.com

**MORGAN MATHAUER**

Office: 317.455.8111  
Cell: 765.318.8053  
mmathauer@kw.com

48 N Emerson Avenue, STE 300,  
Greenwood, IN 46143 - United States  
[www.harwoodcommercialgroup.com](http://www.harwoodcommercialgroup.com)





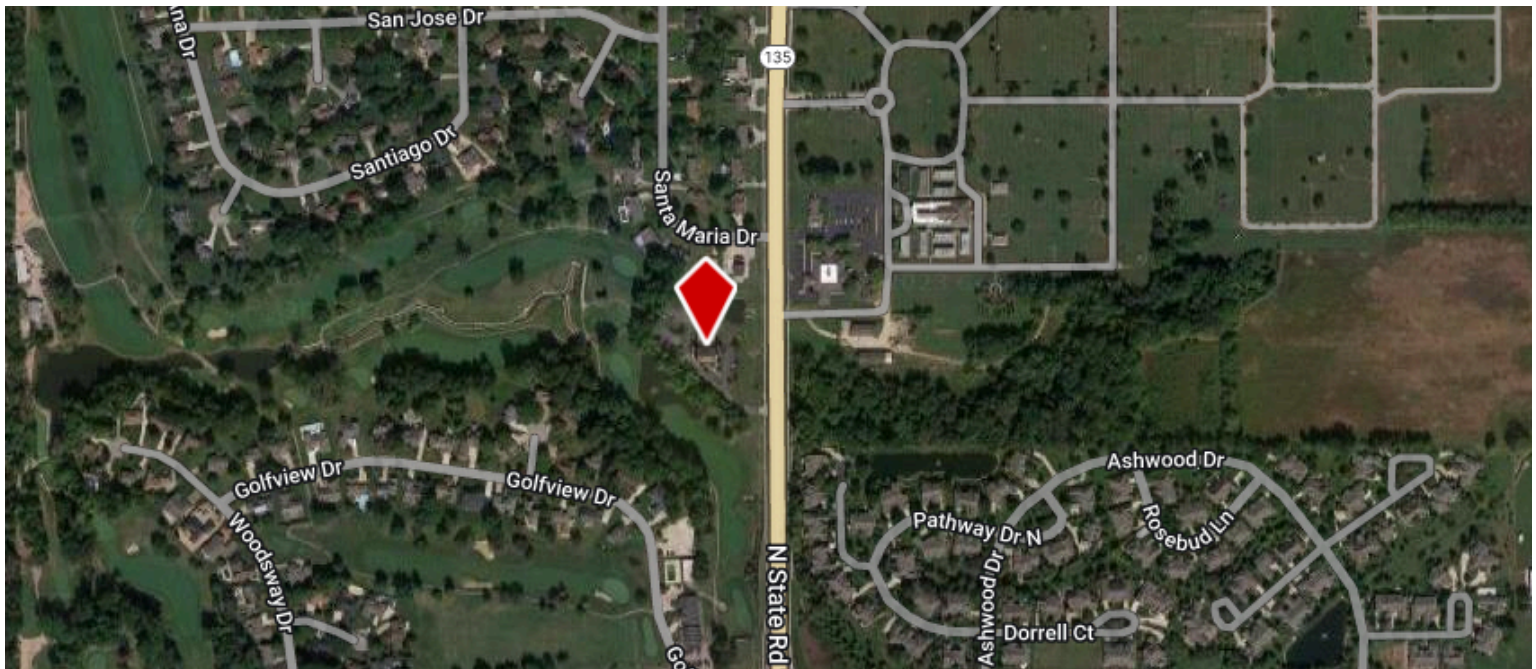
## PROPERTY HIGHLIGHTS

- Suite 103 ±1,083 SF
- Triple Net lease - Includes utilities
- Located on 1st floor/lower level
- Natural lighting from large window
- Open work area + private storage room
- Welcoming reception desk
- Dedicated conference room
- High-traffic corridor with easy access & parking
- Professionally managed building



## LOCATION OVERVIEW

2020 S State Road 135 is positioned along one of Greenwood's busiest retail and service corridors, surrounded by national chains, banks, and thriving local businesses. SR 135 offers direct routes to I-65, County Line Road, and downtown Greenwood.



**TERESA HARWOOD, CCIM**  
 Cell: 317.354.5236  
 tharwood@kw.com

**MORGAN MATHAUER**  
 Office: 317.455.8111  
 Cell: 765.318.8053  
 mmathauer@kw.com

48 N Emerson Avenue, STE 300,  
 Greenwood, IN 46143 - United States  
 www.harwoodcommercialgroup.com